

Trolldtekt® Plus 25

Enhanced acoustic performance
in a 25 mm panel

The easy choice for better acoustics

Troldtekt Plus 25 is a cement-bonded wood wool acoustic panel with a thin acoustic fleece applied to the rear. This combination not only enhances acoustic performance but also ensures smooth handling, storage, and on-site installation.

Troldtekt Plus 25 is the obvious choice for schools and educational buildings, offices, leisure facilities and many other project applications where a high acoustic standard is required. The solution excels in performance across the entire frequency spectrum including low frequencies for better speech intelligibility and well-being. It offers optimum acoustic performance when installed in a 200 mm suspended ceiling construction providing Class A sound absorption ($\alpha_w=0,90$) with a panel thickness of only 25 mm.

Easy handling and storage

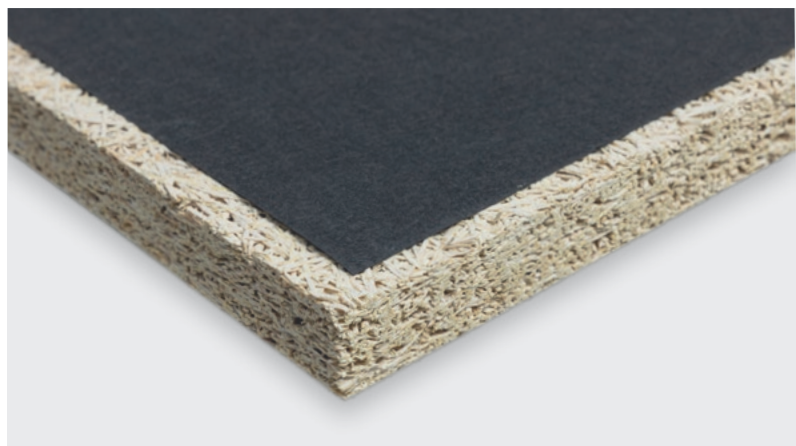
The Troldtekt Plus 25 panel is the same size and weight as a traditional 25 mm Troldtekt acoustic panel. The panels are easy to stack, cut, lift and assemble on-site, making installation time even more effective. Due to its 25 mm thickness, it also reduces transportation costs and storage space.

Troldtekt Plus 25 can be installed as a complete ceiling or wall cladding. The solution is also ideal as a demountable acoustic ceiling in a suspended profile system, making it easy to inspect installations above.



What is acoustic fleece?

Troldtekt Plus 25 is a two-layer acoustic panel that uses a supplementary layer of non-woven acoustic fleece. The combination of Troldtekt's wood concrete panel and the specifically developed back fleece results in optimized sound absorption. At just 0.35 mm, the acoustic fleece is so thin that it does not impact the depth of the panel while achieving Class A sound absorption.



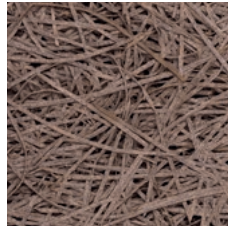
Multiple colours, structures and edge details

Troldtekt Plus 25 is available as an unpainted or painted panel in standard and custom colors. You can also choose between ultrafine and extreme fine structures as well as a selection of our standard edge profiles.

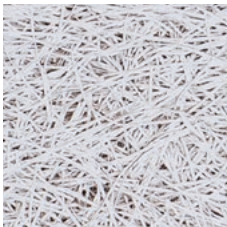
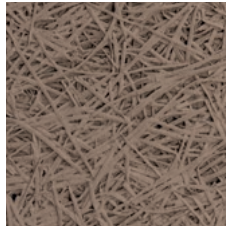
Natural wood



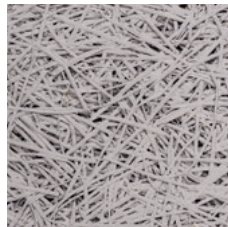
Natural grey (FUTURECEM)



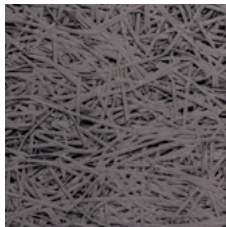
Clay 210



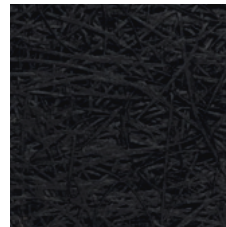
White 101



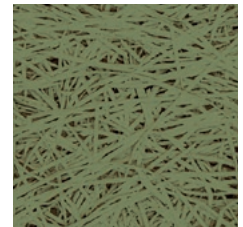
Grey 202



Grey 208



Black 207



Custom colours

Acoustic performance

Troldtekt Plus 25 features a weighted absorption coefficient of up to α_w 0.90, depending on the ceiling's total construction height. This means that it absorbs 90 percent of the sound reaching its surface. The solution is ideal for education, offices, leisure facilities, retail and other types of buildings with high acoustic requirements.

The table below shows how effectively different Troldtekt acoustic solutions with an ultrafine structure absorb sound:

Installation height	Troldtekt acoustic 25 Class (α_w)	Troldtekt Plus 25 Class (α_w)	Troldtekt Plus 25+20 Class (α_w)	Troldtekt Plus 25+40 Class (α_w)
45 mm	D (0.50)	C (0.60)*	B (0.75)	–
55 mm	D (0.50)	C (0.65)	C (0.80)*	–
65 mm	D (0.55)*	C (0.65)*	B (0.80)*	A (1.00)
200 mm	C (0.70)	A (0.90)	A (0.95)	A (1,00)

*Estimated

Troldtekt Plus panels are supplied in two variants, either with a non-woven acoustic fleece (Troldtekt Plus 25) or with sealed mineral wool (Troldtekt Plus 25+20 and Troldtekt Plus 25+40).

Why choose Troldekt Plus 25?

Good acoustics

Troldekt Plus 25 offers a solution that can achieve Class A sound absorption at an installation height of 200 mm whilst also performing well at low frequencies (125-250 Hz).

Robust and durable

The combination of wood and cement means that Troldekt cement-bonded wood wool has a service life of at least 50 years. During use, the panels require virtually no maintenance, and they can withstand high humidity levels.

Effective fire performance

Troldekt Plus 25 is fire-tested and classified in accordance with EN 13501. The panel is accredited with a reaction to fire classification of B-s1, d0.

Simple installation

The panels are supplied in a variety of sizes and edge details ready to install in a T24 or T35 exposed grid system. Alternatively, they can be screw-fixed onto a suspended C60 metal channel or fixed directly onto wooden battens. Due to its only 25 mm thickness and light weight, it provides easy and fast installation and reduces transport and storage costs.



This document reflects Troldekt's knowledge of certifications, standards and products at the time of publication.

No rights can be derived from this document.
We reserve the right to make changes and for typing/printing errors.

The latest version can be found online by scanning the QR code.