

Superior acoustics
– naturally



Calm and characterful interiors with Troldekt

Modern architecture is often characterised by the use of hard materials in large, high-ceilinged spaces. These elements add many good qualities but it is also the perfect recipe for poor acoustics. Children playing, colleagues holding informal meetings and an ordinary conversation around the table in a restaurant can turn into stressful noise as sounds bounce around the room. The short explanation for this is that the reverberation time is too long.

You can shorten the reverberation time using furnishings such as carpets and rugs, curtains, a bookcase full of books or an upholstered sofa but often this is not enough. What is needed is for one or more of the room's

large surfaces to be covered with an acoustic solution that can both significantly reduce the reverberation time and contribute positively to the interior design.

Put a natural ceiling on the sound

With the right ceiling and wall cladding, you can swap noise and stress for calm and comfort. Troldekt acoustic panels manufactured from Danish wood and cement are the natural choice. As well as optimising the acoustics, Troldekt acoustic panels contribute to a healthy indoor climate free from harmful chemicals – and you can choose from a wide selection of designs, colours and structures for your specific project.

Six good reasons for choosing Troldekt

- 1 Superior acoustics**

A combination of wood and cement creates the unique Troldekt surface structure which absorbs sound and reduces reverberation time in a room. Good acoustics are important for wellbeing and key for a healthy indoor climate.
- 2 Documented sustainability**

The sustainability of Troldekt's business and of Troldekt's products is well documented. Troldekt acoustic panels have been certified under the internationally recognised Cradle to Cradle design concept in the Gold category – documenting that they are free from harmful substances.
- 3 Effective fire protection**

Troldekt is classified according to a number of Danish and foreign fire safety standards. Since the wood wool in Troldekt is encased in cement, the panels are flame resistant. Troldekt panels therefore have low flammability and emit little heat during a fire and almost no smoke.
- 4 Healthy indoor climate**

Troldekt panels are a natural, breathable material which can absorb and release moisture. The acoustic panels are hypoallergenic and have achieved leading Danish and international indoor climate certifications.
- 5 Natural strength**

Troldekt is a durable and robust material with a life of at least 50-70 years, even when subjected to moisture or ball impact. The cement gives the acoustic panels their strength, while the wood makes the panels breathable and easy to work with.
- 6 Simple installation**

Troldekt acoustic panels are easy to install – either directly onto battens or as a suspended ceiling in a profile system. Once in use the panels are simple to maintain, paint or repair. This can help extend their already long life.



Do you know about reverberation time?

Noise due to poor acoustics occurs when the reverberation time is too long in a room. To reduce it, you need to choose sound-absorbing materials and Trolldtekt acoustic panels are an effective solution for this purpose.

Large rooms, glazing and plaster, concrete, stone and steel surfaces. All these elements may contribute positively to the architectural design however, unless acoustics are also considered as part of the design, their effect on the soundscape is negative.

Clap to hear the reverberation

Reverberation time is a measure of the time it takes for sound from a particular source to fade away in a room, for example when you clap your hands. Problems with acoustics arise because hard,

smooth surfaces increase the reverberation time in a room as the sound is reflected directly back. If the reverberation time is too long it becomes difficult to distinguish conversation from noise. It takes a long time for the sound waves to dissipate, often resulting in feelings of stress, irritation and discomfort.

With a short reverberation time, the soundscape becomes more precise and speech intelligibility increases significantly. With the short reverberation time, it is easy to have a conversation and hear



what others are saying, because the sound 'dies out' in the room faster. This requires a surface which is soft and uneven so that it can absorb the sound.

A ceiling on noise

The solution to noise and reverberation is therefore to shorten the reverberation time. You can do this by using materials that absorb sound instead of reflecting it. Soft furnishings such as curtains, carpets and rugs can absorb some sound, but this is often not enough. It is therefore important that you choose materials with high sound absorption coefficients for large surfaces in a room.

The open surface structure of Troldekt acoustic panels installed on ceilings and walls means that the sound will quickly die out, producing really good acoustics. While a concrete ceiling absorbs only 1–2 per cent of a sound, a Troldekt ceiling will typically absorb 80–90 per cent.



Can your building pass the 'clapping test'?



The sound of the clap 'tails off' and lasts for 2–3 seconds. It is hard to distinguish conversation from noise.



The clap 'dies' immediately (no more than one full second). The sound is pleasant and well-balanced.

80–90%

Did you know that a concrete ceiling absorbs 1–2 per cent of sound in a room, while a ceiling structure with Troldekt typically absorbs about 80–90 per cent of sound?



Direct installation of a Trolldtekt acoustic ceiling in a private home.

With and without Trolldtekt: The difference it makes

You can significantly reduce reverberation time by choosing a Trolldtekt acoustic solution. Whichever solution you choose, the open surface structure will absorb sounds that would otherwise reflect from the hard surfaces.

The way in which the Trolldtekt acoustic panels are installed will have a bearing on the reverberation time. For the best possible acoustic effect in private homes, install Trolldtekt acoustic panels directly beneath the 200–300 mm mineral wool and vapour barrier roof construction. However, installing

Trolldtekt under an existing ceiling may also be a viable option.

In project buildings such as large offices, schools, institutions and other premises with special acoustic requirements, the optimum solution is usually to install a suspended Trolldtekt ceiling within a profile system. An ideal gap of 200–300 millimetres from the fixed ceiling is recommended so that there is a cavity above the acoustic ceiling.



Troldtekt installed as a suspended ceiling in a profile system under the fixed ceiling.

Troldtekt® acoustic panels

The classic Troldtekt acoustic panel, which ensures superior acoustics when used as ceiling and wall cladding in all types of buildings.

Troldtekt® Plus

Acoustic panel with a backing of sealed mineral wool. A space-saving solution for retrofitting on existing ceilings or as suspended ceilings.

Floating acoustic clouds

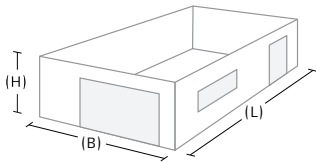
Floating acoustic clouds are an alternative to wall-to-wall acoustic ceilings – or the clouds can be used to further improve the acoustics in one area of the room.

Tip! Calculate the reverberation time

At www.troldtekt.com you can use our acoustics calculator to gain a quick overview of the acoustics of your rooms – depending on their size, shape and the materials used.

How reverberation time decreases with a suspended Trolldtekt ceiling

The example below shows the reverberation time in the same room with and without a suspended Trolldtekt acoustic ceiling. The reverberation time decreases from an average of 4.69 seconds to 0.48-0.53 seconds after installation of the suspended Trolldtekt ceiling with underlying mineral wool. The lower reverberation time creates the best possible conditions for both conversations and concentration.



Specifications

Length (L): 9 m
 Height (H): 3 m
 Width (W): 7 m
 Volume (V): 189 m³

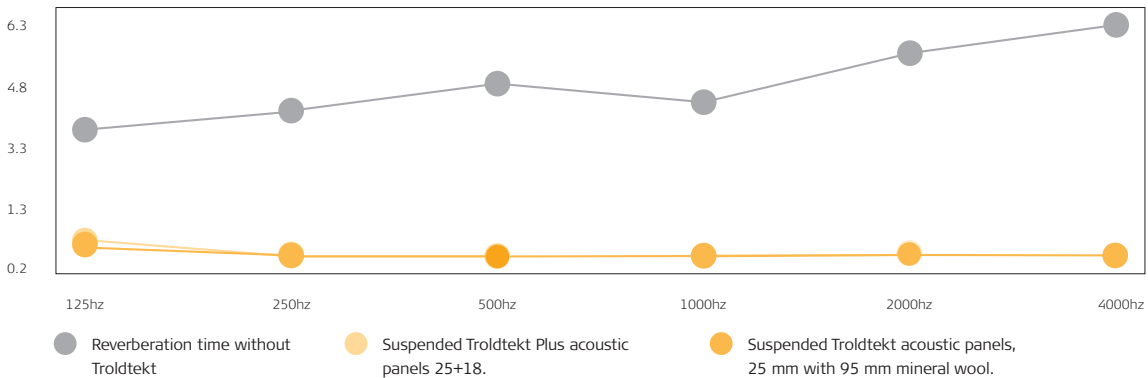
Materials

Floor: Cork, rubber or vinyl
 Wall: Rendered and painted masonry or concrete
 Solid wood door: 6 m²
 Double glazing 3+12+3 mm: 15 m²

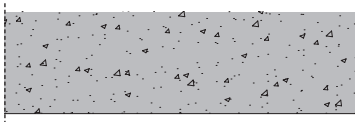
Area

Total floor area: 63 m²
 Total wall area: 75 m²
 Total ceiling area: 63 m²

Reverberation time T [sec]	Frequency						Average	
	125hz	250hz	500hz	1000hz	2000hz	4000hz	From 125Hz	From 250Hz
Concrete ceiling without Trolldtekt	3.56	4.03	4.73	4.24	5.45	6.15	4.69	4.92
Suspended Trolldtekt Plus acoustic panels	0.84	0.45	0.44	0.46	0.52	0.45	0.53	0.47
Suspended Trolldtekt acoustic panels with 95 mm mineral wool	0.66	0.43	0.44	0.44	0.47	0.45	0.48	0.45



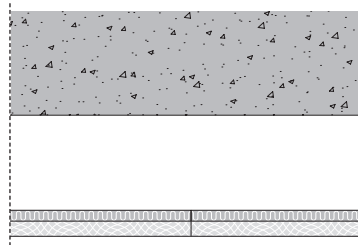
Concrete ceiling without Trolldtekt



In the example, a bare concrete ceiling was used without the installation of sound absorbers.

4.69 sec.

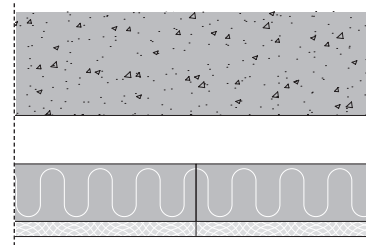
Suspended Trolldtekt Plus acoustic panels



Here, a suspended Trolldtekt acoustic ceiling is installed beneath the concrete ceiling. The Trolldtekt Plus acoustic panels are two-layer panels with a mineral wool backing. With a gap above the Trolldtekt ceiling, the total installation height is 200 mm.

0.53 sec.

Suspended Trolldtekt acoustic panels with 95 mm mineral wool

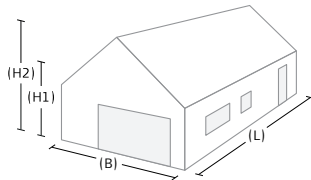


Here, too, a suspended Trolldtekt acoustic ceiling has been installed beneath the concrete ceiling. The structure consists of classic 25 mm Trolldtekt acoustic panels and 95 mm mineral wool above. With a gap above the mineral wool, the total installation height is 200 mm.

0.48 sec.

How reverberation time decreases in an open-plan kitchen-dining-living room

In a typical open-plan kitchen-dining-living room, where many of a family's activities occur, an ideal reverberation time is somewhere between 0.6 and 0.8 seconds. The example below shows the reverberation time in the same living space with and without a Troldekt acoustic ceiling. The reverberation time decreases on average from 3.22 seconds to 0.46-0.71 seconds after Troldekt installation.



Specifications

Length (L): 8 m
Height 1 (H1): 2.4 m
Width (W): 5 m
Height 2 (H2): 4 m
Volume (V): 128 m ³

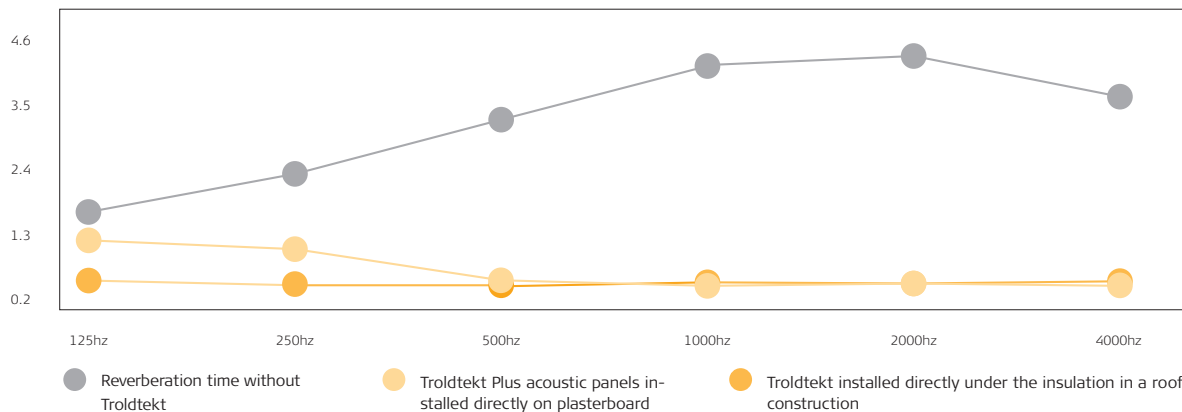
Materials

Cast concrete/tiled floor: 40 m ²
Rendered wall: 50.4 m ²
Solid wood door: 8 m ²
Double glazing 3+12+3 mm: 12 m ²

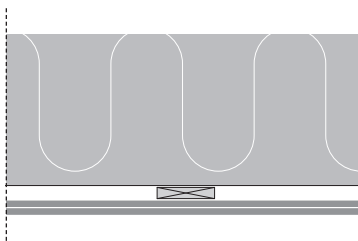
Area

Total floor area: 40 m ²
Total wall area: 50.4 m ²
Total ceiling area: 47.49 m ²

Reverberation time T [sec]	Frequency						Average	
	125hz	250hz	500hz	1000hz	2000hz	4000hz	From 125Hz	From 250Hz
Plasterboard ceilings without Troldekt	1.69	2.31	2.23	4.14	4.31	3.62	3.22	3.52
Troldekt Plus acoustic panels installed directly on plasterboard	1.21	1.12	0.56	0.41	0.45	0.42	0.69	0.59
Troldekt installed directly under the insulation in a roof construction	0.50	0.44	0.42	0.47	0.45	0.49	0.46	0.45



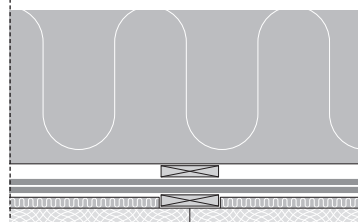
Plasterboard ceiling without Troldekt



In the example, two layers of plasterboard have been used to ensure an attractive finish. One layer of plasterboard is also a popular solution, although it does not make much of a difference for the acoustics.

3.22 sec.

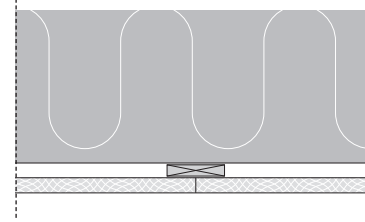
Retrofitted 25+18 mm Troldekt Plus acoustic panels beneath a plasterboard ceiling



Here, Troldekt acoustic panels have been retrofitted beneath the plasterboard ceiling. The Troldekt Plus acoustic panels are two-layer panels with a mineral wool backing.

0.69 sec.

25 mm Troldekt acoustic panels installed directly beneath the roof construction



Here, a Troldekt acoustic ceiling was installed directly beneath the insulation and vapour barrier roof structure when the house was built. This solution further reduces the reverberation time in the low frequency range.

0.46 sec.

From headaches to 'hygge' in a brand-new home

It was not exactly pure joy when Daniel Boje and his family moved into their new home. The poor acoustics affected their wellbeing, but that changed significantly when they chose a Troldekt ceiling. The reverberation time was reduced by up to 60 per cent.

Daniel Boje and his family moved into a new house in Solbjerg, south of Aarhus, Denmark. Shortly after moving in, they realised there was something completely wrong with the acoustics. Sounds were being bounced around, even though the house already had sound-absorbing plaster ceilings in several rooms.

Initially, they tried carpeting and closing doors. But that did not solve the problems.

"To begin with, we had to close all the doors to the various rooms to keep the noise at an acceptable level. We ended up with headaches, and we grew both frustrated and annoyed with each other. We didn't have the lovely sense of calm that we have now," says Daniel Boje.

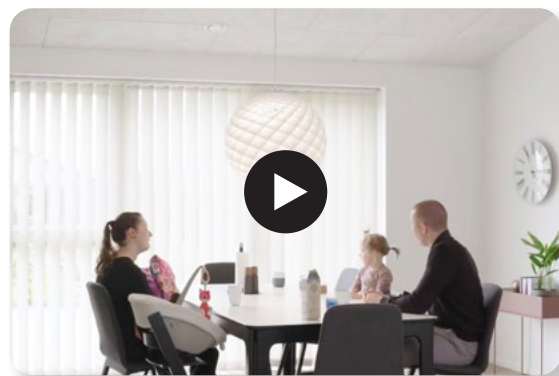




Reduced reverberation time

The unhappy situation changed completely when the family chose to replace the existing ceilings with Trolldtekt acoustic panels. Professional before-and-after sound measurements show that the reverberation time in the kitchen-dining-living room and bathroom was reduced by up to 60 per cent.

"The all-important space for us, the kitchen-dining-living room, where we spend most of our time, now has a completely different feel of peace and 'hygge'. Visitors also comment on the tranquility of our home," concludes Daniel Boje.



Watch a film from the private home in Solbjerg, Denmark, at www.trolldtekt.com



The Nordic Barn House, Denmark

Designed by designer and architect Bruno Jakobsen, the Nordic Barn House is situated in a forest on the southern outskirts of Randers, Denmark. The architect himself lives there with his family. A great deal of care has gone into the floor plan and the choice of materials – and the design solution Troldekt line is key to the new Nordic look.

Project: The Nordic Barn House in southern Randers, Denmark

Architects: BRUNOJAKOBSENDESIGN+

Troldekt solution: Troldekt line, Black 207

Instagram: @thenordicbarnhouseproject

Office of Oracle, Warsaw, Poland

The office of Oracle has been designed with the best solutions available. The final selection of materials was not only led by eco-friendly and less-waste solutions but also with great attention to acoustics. Troldekt acoustic tiles contributes to overcoming common problems with open office areas, where there is insufficient sound absorbers or barriers.

Project: Office of Oracle, Warsaw

Architects: Massive Design

Troldekt solution: Troldekt acoustic panels, Troldekt rhomb and Troldekt rhomb mini, Natural wood and Black 207



London Design Museum

London Design Museum has been created within the skin of an existing building - the Grade II former Commonwealth Institute, famous for its dramatic parabolic copper roof. Troldekt acoustic panels were chosen in order to tie internal spaces together with a visually attractive textured surface which has superior acoustic performance.

Project: London Design Museum

Architects: OMA

Troldekt solution: Troldekt acoustic panels, Natural wood, Grey 202 and RAL 5004



Child care centre Egedammen, Denmark

Børnehuset Egedammen has been designed as an inviting environment for children characterised by a great deal of spatial variation. The result is an exciting childcare institution.

Project: Børnehuset Egedammen

Design/interior: BBP arkitekter

Troldtekt solution: Troldtekt line, Troldtekt acoustic panels, Natural wood

Headquarters HSB Bouw, the Netherlands

In the renovation of the HSB Bouw headquarter in the Slobbeland of the Netherlands, new ceilings were installed as part of the makeover. The sleek black finish in Troldtekt line design was chosen for the reception area and meeting rooms to combat the problems of reverberated sound and add tactile and visual appeal.

Project: Headquarters HSB Bouw, the Netherlands

Architects: In-House design

Troldtekt solution: Troldtekt line design, Black 207



The Chamberlain Hotel, London

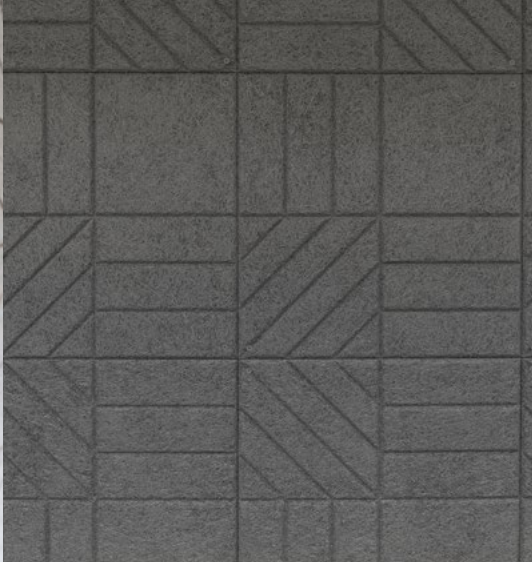
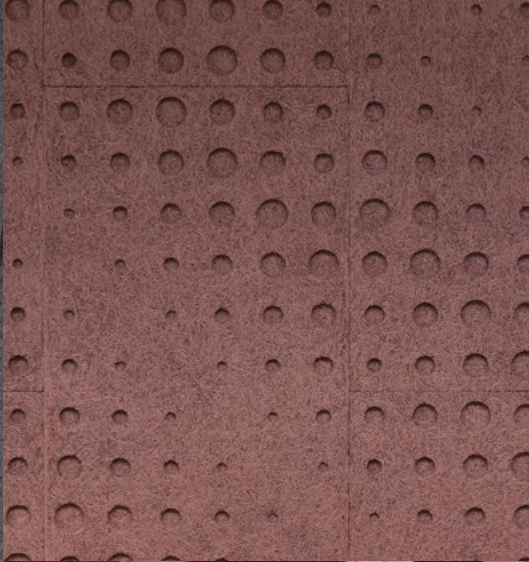
Sustainability and ethical design are the keystone principles of the underground cocktail bar and all-day dining venue owned by Fuller's Brewery in central London. The designers were keen to specify as many sustainable and Cradle-to-Cradle certified materials as possible, and Troldtekt acoustic panels were specified to help combat the problems generated by noise and reverberated sounds.

Project: The Chamberlain Hotel, London

Architects: Sibley Grove (interior design)

Troldtekt solution: Troldtekt acoustic panels, Natural grey







Choose your own design, textures and colours

Are you dreaming of a natural, classic white or evocative black ceiling? Are you into a strict Nordic look or more distinctive patterns? The choice is yours.

Light and airy, elegant grooves in the surface – or maybe a black-painted ceiling to create just the right mood?

Ceilings and walls are large surfaces and allow you to combine superior acoustics with a stylish design. You have great freedom to design your Trolldtekt acoustic solution to match your exact wishes for your construction project.

Maybe you are all for classic Trolldtekt acoustic panels with a simple, light and Nordic styling or perhaps expressive colours are more you. Or you may prefer one of the characterful Trolldtekt design solutions with their distinctive or discreet grooves – and in dimensions that can be used to create different patterns on ceilings and walls. All variants contribute to superior acoustics and a healthy indoor climate.

The width of the wood wool determines the characteristic structure of the Trolldtekt acoustic panels. You can choose between extreme fine, ultrafine, fine and coarse depending on the look you want to achieve.

Trolldtekt can be supplied either in natural wood/ natural grey or as painted acoustic panels. They consist of wood wool mixed with either white or grey cement, and the mixture creates the two variants of natural wood and natural grey. The Trolldtekt panels can then subsequently be spray-painted with water-based paint in a RAL or NCS colour of your choice.

You can find inspiration and experience a wide range of references showing private homes, restaurants, offices and many other types of buildings featuring Trolldtekt acoustic solutions at www.trolldtekt.com.

HEALTHY INDOOR CLIMATE SINCE 1935

Troldtekt A/S has been designing, developing and manufacturing Troldtekt acoustic panels since 1935 – from locally sourced natural materials and under state-of-the-art conditions with minimal environmental impact. Our products are developed and manufactured in Denmark and distributed in numerous countries around the world.

We are trendsetting

Our vision is to be a trendsetter within intelligent acoustic solutions that focus on a sustainable indoor climate. We therefore develop new solutions in close collaboration with industry experts, architects, and other building consultants.

We take responsibility

It is important for us to play a responsible role in society – also for our own sake. We believe companies do well by doing good. We have therefore systematised our social responsibility efforts by committing to the UN Global Compact – the world's largest voluntary corporate social responsibility initiative.

We create added value

The sustainable Cradle to Cradle design concept is a key part of our business strategy. The concept focuses on ensuring that materials add value for the environment, for society and for our business. Through our collaboration with international research and advisory institute EPEA, we ensure that our activities are in line with the international Cradle to Cradle principles.

We are part of a group with ambitious climate goals

Since 2022, Troldtekt has been part of the Kingspan Group, a listed Irish building materials company with operations in more than 70 countries. With its Planet Passionate programme, Kingspan is setting ambitious climate goals that are very much in line with Troldtekt's Cradle to Cradle strategy. Kingspan's ambitious targets include zero waste to landfill and net zero carbon manufacturing in 2030.

Visit Troldtekt online for more inspiration:



#troldtekt
#goodacoustics



This printed matter is produced to the highest possible environmental standards.

The printed matter is Cradle to Cradle-certified, which is one of the world's strictest environmental certifications. The certification is your guarantee that the paper and inks are produced without chemicals or heavy metals.

The printed matter also carries the Nordic Swan Ecolabel – the official ecolabel throughout the Nordic region. The label makes it easy to choose the best products for the environment.

The printed matter is also produced to net zero carbon standards, as the printing company uses local wind power, documented via certificates of origin. The wood for the paper comes from sustainable FSC forestry operations, which means, among other things, that no more wood is felled than the forests can reproduce.